

SAVE FREO BEACHES ALLIANCE

WHAT DO WE STAND FOR

Protecting Fremantle beaches & ensuring sustainable development which will support the social amenity & environmental integrity of the beaches & surrounding environment

HOW DO WE WORK

- Even the smallest contribution is valued
- That we respect the need for all members to limit their involvement to the extent that they have capacity within their busy lives
- We aim to be a well informed and disciplined group
- We go hard on the issues and easy on the personalities

HOW ARE WE STRUCTURED

Refer to Alliance Structure diagram attached

SO WHERE ARE WE IN THE PROCESS

Refer “Pathway to Policy” diagram attached

SFBA GROUP POSITION

The Save Fremantle Beaches Alliance has a number of key statements;

- The need for more facilities for recreational boat users is understood, but it **cannot be at the expense of the beaches and beach users**;
- **Alternative and more suitable sites** for the boat stacker and boat ramp are available;
- The partial enclosure of South Beach and almost complete enclosure of Bathers Beach is expected to turn them in to **cul de sacs for pollutants**, dispersed from the sea bed during construction and then by the subsequent use of the proposed facilities;
- The DPI appears to have almost completely **ignored the possible impact on the beaches**, maintaining that they are ‘unchanged’;
- **The consultation process has so far been flawed** in ignoring beach users, perhaps as an extension of ignoring the possible impact on the beaches; and

- Save Fremantle Beaches Alliance **is opposed to any private residential development located over the seabed** (including recently filled seabed) because:
 - it is contrary to the State Coastal Planning Policy in that it is not a coastal dependent land use
 - it contravenes Common Law in relation to the use of the sea for boating, fishing and navigation.
- The Minister for Planning and Infrastructure is **capable of making good decisions when the community is listened to**. The Leighton and Fremantle By-Pass decisions were listed as examples.

WHAT DOES THE PROPOSED MARINA/HARBOUR LOOK LIKE?

Go to our website at [www: savefreobeaches.com](http://www.savefreobeaches.com)

SOME ISSUES ALREADY IDENTIFIED (as per pro-forma submission)

Public health & safety will be at risk.

- A threefold increase in boat storage will increase water pollution. Boats leaving and returning to storage will pose a significant danger to recreational beach users (e.g., swimmers and canoeists).

The ecological integrity of Bather's Beach & South Beach will be further damaged.

- Enclosing Fremantle's Beaches will reduce natural water flow patterns, turning these areas into stagnant, debris-choked backwaters (e.g., increased oil spills, litter & human sewage).

Social amenity will be negatively impacted.

- Fremantle's beaches offer popular, low-cost recreational activities for WA residents and tourists. The proposed development, extending 1.66km into the ocean, discourages walkers (with & without dogs), swimmers, windsurfers and recreational fishermen/woman. Furthermore, the proposed 12m high boat staking facility will obstruct ocean and sunset views.

Traffic congestion & noise pollution will increase.

- The proposed development of residential and short-stay accommodation, in addition to extra storage facilities for 2,700 boats, will result in increased traffic congestion and noise pollution in and around Fremantle.

Wrong needs being met

- The needs of recreational boat users and pressure from developers should not be placed ahead of protecting the beach and preserving the beaches for beach users. The real need is to protect and conserve the few public beaches south of the Port that have not already been lost to development.

MEMBERS FOR FREMANTLE - JIM McGINTY & MELISSA PARKES POSITION

Refer Press Statement Thursday 24th January which is attached.

While the position outlined by the members is very welcome and most encouraging, good sense will only prevail if the members not only represent the views of beach users to Ms Allannah McTiernan, Minister for Planning and Infrastructure, but also use their **influence** with her.

MAYOR OF FREMANTLE - PETER TAGLIAFERRI'S POSITION

The Mayor's position will be formed once the Council has received a report from the Department for Planning and Infrastructure on outcomes of the public submission process.

The Mayor has offered to include the Save Freo Beaches Alliance in a City of Fremantle consultative committee on the 'Three Harbours Policy'.

HOW CAN YOU GET INVOLVED

- Support all events
- Attend Public Meetings
- Buy a sticker
- Sign a petition (at cafés and info stalls)
- Write to local member, Minister
- Provide donations
- Use your skills - join a sub-group
- Offer time to help out when needed

INFORMATION about the Alliance and its activities

Go to our website www.savefreobeaches.com

If no access to email? Look out for info at the following locations:

- Aubergines
- Falduzzi
- South Beach Café
- Bathers Beach
- IGA South Freo
- Manna
- Hilton IGA
- Local Café Hilton
- Hamilton Hill IGA
- Notice Board Marine Terrace Park
- Little Dog Beach Tin Shelter
- WGV Boards
- Stammers Boards Palmyra
- Hubbles
- Melville Plaza Boards
- Cockburn Library
- Zazi's Café
- Meeting Place inside and out
- X-Wray Café
- Fremantle Library Boards
- Fremantle Leisure Centre Boards
- Kelmscott
- Hilton/Hamilton Hill
- Stammers Boards Palmyra

INFORMATION about the Proposal

If you wish to find out more about the background of this proposal you can also go to the DPI website <http://www.dpi.wa.gov.au/imate/15112.asp>

Key publications produced to date include:

Working Paper 1: Background and context to the formulation of a new Fremantle Harbours Policy.

Working Paper 2: The need for refurbishment and expansion of the Harbours.

Working Paper 3: Traffic and transport report for the Fremantle Harbours Policy.

Working Paper 4: Fremantle Harbours Policy community consultation process.

Working Paper 5: Supplementary working paper presenting a discussion of the design process for developing the planning scenarios. (Currently being updated)

Attachment A

Alliance Structure

Attachment B

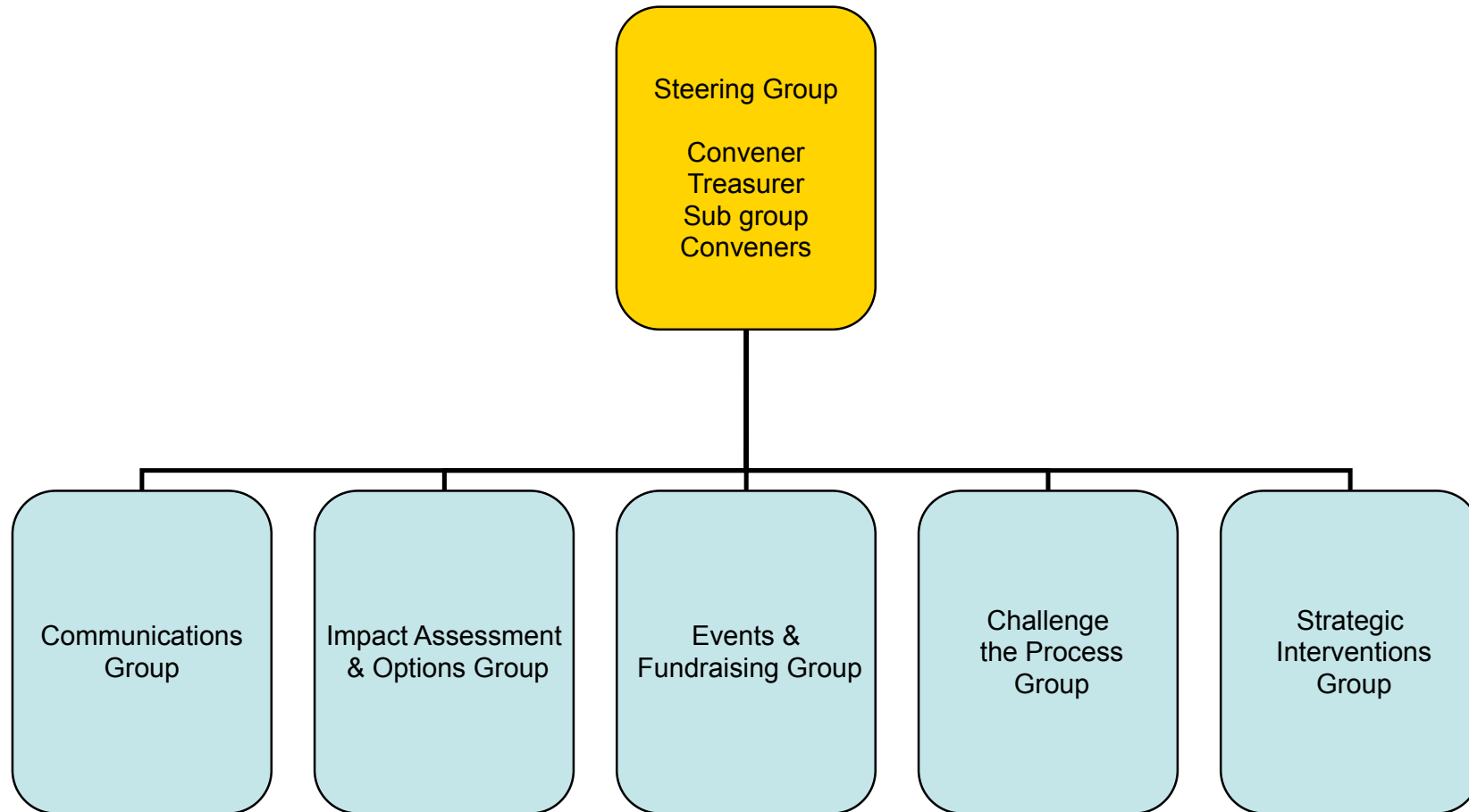
Pathways to Policy

Attachment C

Members for Fremantle Press Statement



Alliance Structure (Attachment A)



Pathway to Policy

Community
Consultation closes 1
February 2008



Submissions report by
DPI. Consolidation of
issues and responses



**Fremantle Harbours
Steering Committee**

Amendments and
recommendations



Fremantle City Council

Amendments and
recommendations



**Western Australian
Planning Commission**

Determination on each
issue

Basis Policy

Attachment B

WAPC Responses

Uphold a submission,
modify plan

Agree in Principle, but
no change

Dismiss issue, no action

Three Harbours Media Release

The State and Federal members for Fremantle, Jim McGinty & Melissa Parke have resolved to oppose those aspects of the 'three harbours' development which would take away public beaches.

Fremantle has already given up much of its beachfront to the Port, fishing boat harbour and the Fremantle Sailing Club.

The two members said that they would work to protect public access to South Beach- a local place for families to relax and enjoy.

At the northern end of the 'Three harbours', the proposal to effectively enclose bathers beach with a groyne should be rejected for both heritage and amenity reasons.

Both members committed to fight any plan which would see the loss of even one centimetre of public beach.

Jim McGinty said he supported an expansion of boating facilities but not at the expense of public beaches.

Melissa Parke said "The harbour & beaches are rightly a key focus in the lives of the people of Fremantle. Any development must not have the effect of transferring public amenity into private hands."

"Fremantle has traditionally been a place where the fishing industry and mixed use commercial interests have been balanced with a degree of public access and amenity that is unique to the port city. All of the current proposed models of development would have a negative impact on the Fremantle community." Ms Parke said.

Mr McGinty said that the recently established boat stacker in Mews Road was a visual eyesore. Further boat stacking facilities should not be allowed to visually pollute this part of the coast.

The local politicians said that planning for the evolution of the Fremantle waterfront should be based on the following principles:

1. There should be no loss of access to public beaches.
2. Bathers Beach and South Beach must remain as they are, including their views to the open horizon.
3. Further boat stacking facilities should not be allowed.
4. The commercial fishing industry must be protected and promoted.

Any boating development should benefit the entire Fremantle community not take away public beaches enjoyed by all.

Contacts: Jim McGinty 9336 7000
Federal contact